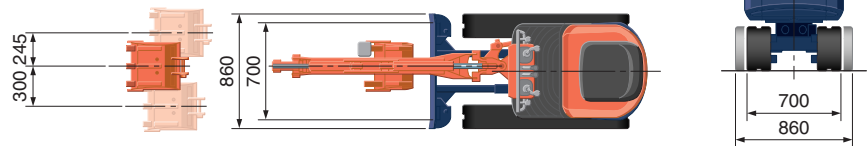
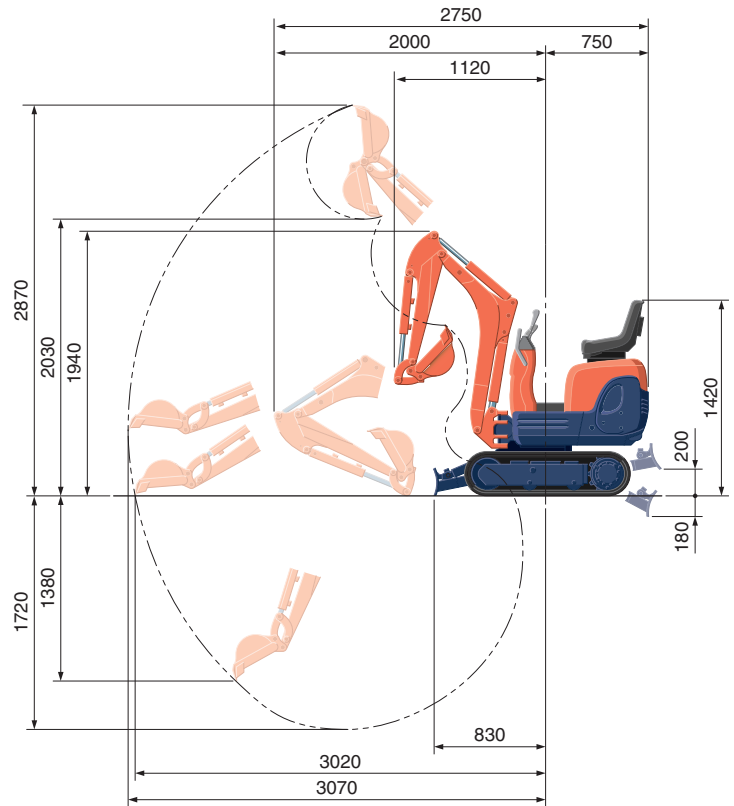


# SPECIFICATIONS

# WORKING RANGE

\*with rubber shoe type

Machine weight	Rubber crawler	kg	850	
Bucket capacity, std. SAE/CECE		m <sup>3</sup>	0.022/0.018	
Bucket width	with side teeth	mm	368	
	without side teeth	mm	350	
Engine	Model	D722-BH-3		
	Type	Water-cooled,diesel engine E-TVCS(Economical,ecological type)		
	Output ISO90249	PS/rpm	10.2/2050	
		kW/rpm	7.4/2050	
	Number of cylinders	3		
	Bore x stroke	mm	67 x 68	
Displacement	cc	719		
Overall length	mm	2750		
Overall height	mm	1420		
Swivelling speed	rpm	8.3		
Rubber shoe width	mm	180		
Tumbler distance	mm	900		
Dozer size (width x height)	mm	700/860 x 200		
Hydraulic pumps	P1, P2	Gear pump		
	Flow rate	ℓ/min	10.5+10.5	
	Hydraulic pressure	MPa (kgf/cm <sup>2</sup> )	16.7 (170)	
Max.digging force	Arm	kN (kgf)	4.5 (460)	
	Bucket	kN (kgf)	9.8 (1000)	
Boom swing angle (left/right)	deg	55/60		
Auxiliary circuit	Flow rate	ℓ/min	21.0	
	Hydraulic pressure	MPa (kgf/cm <sup>2</sup> )	170	
Hydraulic reservoir	ℓ	12.5		
Fuel tank capacity	ℓ	12.0		
Max. travelling speed	km/h	2.0		
Ground contact pressure	kPa (kgf/cm <sup>2</sup> )	22.5 (0.23)		
Ground clearance	mm	150		



Unit: mm

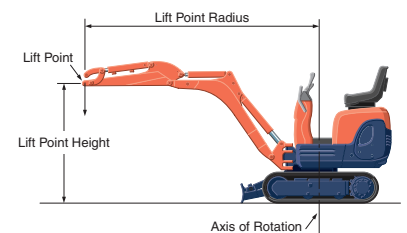
# LIFTING CAPACITY

Lift Point Height	kN (ton)					
	Lifting point radius (2.0m)			Lifting point radius (2.5m)		
	Over-front		Over-side	Over-front		Over-side
	Blade Down	Blade UP		Blade Down	Blade UP	
1.0 m	2.4 (0.24)	1.7 (0.18)	1.4 (0.14)	2.0 (0.20)	1.2 (0.12)	1.0 (0.10)
0.5 m	2.7 (0.27)	1.6 (0.17)	1.3 (0.14)	2.0 (0.20)	1.2 (0.12)	0.9 (0.10)

Please note:

\* The lifting capacities are based on ISO 10567 and do not exceed 75% of the static tilt load of the machine or 87% of the hydraulic lifting capacity of the machine.

\* The excavator bucket, hook, sling and other lifting accessories are not included on this table.



\* Working ranges are with Kubota standard bucket, without quick coupler.

\*Specifications are subject to change without notice for purpose of improvement.



## KUBOTA (U.K.) LTD

Dormer Road, Thame Oxfordshire,  
OX93UN, U.K.

Phone : 01844-214500

F a x : 01844-261568