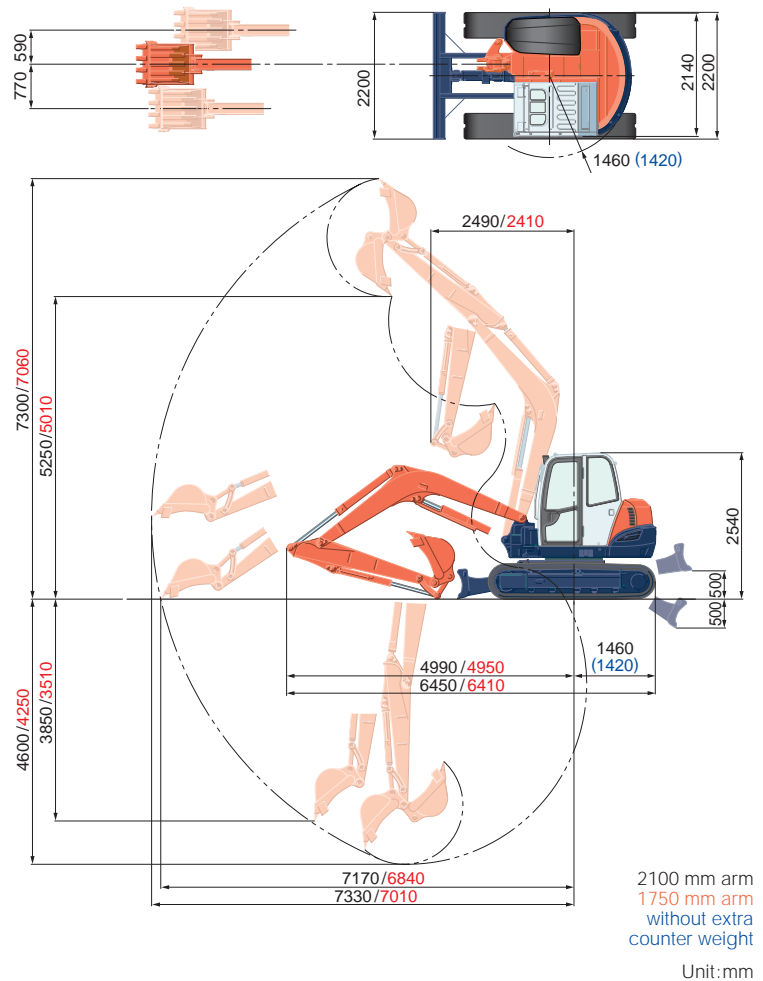


SPECIFICATIONS

*with rubber shoe, JPN bucket and 2100 mm arm

Machine weight (w/o extra counter weight)	kg	8195 (7960)	
Bucket capacity, std. SAE/CECE	m ³	0.25/0.21	
Bucket width	With side teeth	mm 800	
	Without side teeth	mm 700	
Engine	Model	V3800DI	
	Type	Water-cooled, diesel engine E-TVCS (Economical, ecological type)	
	Output ISO9249	PS/rpm	65.0/2000
		kW/rpm	47.8/2000
	Number of cylinders		4
Bore × Stroke	mm	100 × 120	
Displacement	cc	3769	
Swivelling speed	rpm	9.5	
Rubber shoe width	mm	450	
Tumbler distance	mm	2300	
Dozer size (width × height)	mm	2200 × 500	
Hydraulic pumps	P1, P2	Variable displacement pump	
	Flow rate	ℓ/min	72.0 × 2
	Hydraulic pressure	MPa (kgf/cm ²)	27.5 (280)
	P3		Gear type
	Flow rate	ℓ/min	66.6
Max. digging force	Arm	kN (kgf)	38.1 (3880)
	Bucket	kN (kgf)	65.2 (6650)
Boom swing angle (left/right)	deg	70/60	
Minimum front swivel radius with boom swing (left/right)		2050/2380	
Auxiliary circuit (SP1)	Max. flow rate	ℓ/min	100
	Max. hydraulic pressure	MPa (kgf/cm ²)	20.6 (210)
Auxiliary circuit (SP2)	Max. flow rate	ℓ/min	66.6
	Max. hydraulic pressure	MPa (kgf/cm ²)	20.6 (210)
Hydraulic reservoir	ℓ	75	
Fuel tank capacity	ℓ	115	
Max. travelling speed	Low	km/h	2.8
	High	km/h	5.1
Ground contact pressure	kPa (kgf/cm ²)	35.6 (0.363)	
Ground clearance	mm	390	

WORKING RANGE



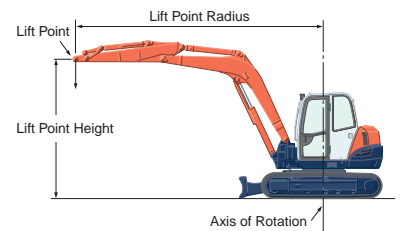
LIFTING CAPACITY

*With extra counter weight

Lift Point Height	daN (ton)												
	Lifting point radius (Min)			Lifting point radius (3m)			Lifting point radius (4m)			Lifting point radius (Max)			
	Over-front		Over-side	Over-front		Over-side	Over-front		Over-side	Over-front		Over-side	
	Blade Down	Blade Up		Blade Down	Blade Up		Blade Down	Blade Up		Blade Down	Blade Up		
5m	1750 Arm						1620 (1,65)	1620 (1,65)	1620 (1,65)				
	2100 Arm						1420 (1,45)	1420 (1,45)	1420 (1,45)				
3m	1750 Arm	3480 (3,55)	3480 (3,55)	3480 (3,55)	2500 (2,55)	2500 (2,55)	2500 (2,55)	1960 (2,00)	1960 (2,00)	1720 (1,75)	1620 (1,65)	1230 (1,25)	930 (0,95)
	2100 Arm	2260 (2,30)	2260 (2,30)	2260 (2,30)	2110 (2,15)	2110 (2,15)	2110 (2,15)	1770 (1,80)	1770 (1,80)	1720 (1,75)	1520 (1,55)	1130 (1,15)	880 (0,90)
2m	1750 Arm	3780 (3,85)	3430 (3,50)	2500 (2,55)	3630 (3,70)	3330 (3,40)	2400 (2,45)	2350 (2,40)	2110 (2,15)	1620 (1,65)	1620 (1,65)	1130 (1,15)	880 (0,90)
	2100 Arm	3820 (3,90)	3820 (3,90)	2890 (2,95)	3240 (3,30)	3240 (3,30)	2500 (2,55)	2210 (2,25)	2160 (2,20)	1620 (1,65)	1520 (1,55)	1030 (1,05)	780 (0,80)
1m	1750 Arm	2940 (3,00)	2940 (3,00)	2260 (2,30)	3090 (3,15)	3090 (3,15)	2210 (2,25)	2700 (2,75)	2010 (2,05)	1520 (1,55)	1670 (1,70)	1080 (1,10)	830 (0,85)
	2100 Arm	2750 (2,80)	2750 (2,80)	2550 (2,60)	4020 (4,10)	3140 (3,20)	2260 (2,30)	2600 (2,65)	2010 (2,05)	1520 (1,55)	1570 (1,60)	1030 (1,05)	780 (0,80)
0m	1750 Arm	2300 (2,35)	2300 (2,35)	2300 (2,35)	4120 (4,20)	3040 (3,10)	2160 (2,20)	2790 (2,85)	1960 (2,00)	1420 (1,45)	1720 (1,75)	1130 (1,15)	830 (0,85)
	2100 Arm	1910 (1,95)	1910 (1,95)	1910 (1,95)	4170 (4,25)	3040 (3,10)	2160 (2,20)	2790 (2,85)	1960 (2,00)	1420 (1,45)	1570 (1,60)	1030 (1,05)	780 (0,80)
-1m	1750 Arm	3290 (3,35)	3290 (3,35)	3290 (3,35)	3780 (3,85)	3040 (3,10)	2160 (2,20)	2700 (2,75)	1910 (1,95)	1420 (1,45)	1720 (1,75)	1270 (1,30)	930 (0,95)
	2100 Arm	1860 (1,90)	1860 (1,90)	1860 (1,90)	3920 (4,00)	2990 (3,05)	2160 (2,20)	2750 (2,80)	1910 (1,95)	1420 (1,45)	1620 (1,65)	1130 (1,15)	830 (0,85)
-3m	1750 Arm	2400 (2,45)	2400 (2,45)	2400 (2,45)	1810 (1,85)	1810 (1,85)	1810 (1,85)						
	2100 Arm	4950 (5,05)	4950 (5,05)	4950 (5,05)	2350 (2,40)	2350 (2,40)	2210 (2,25)	1570 (1,60)	1570 (1,60)	1470 (1,50)			

*Without extra counter weight

Lift Point Height	daN (ton)												
	Lifting point radius (Min)			Lifting point radius (3m)			Lifting point radius (4m)			Lifting point radius (Max)			
	Over-front		Over-side	Over-front		Over-side	Over-front		Over-side	Over-front		Over-side	
	Blade Down	Blade Up		Blade Down	Blade Up		Blade Down	Blade Up		Blade Down	Blade Up		
5m	1750 Arm						1620 (1,65)	1620 (1,65)	1620 (1,65)				
	2100 Arm						1420 (1,45)	1420 (1,45)	1420 (1,45)				
3m	1750 Arm	3480 (3,55)	3480 (3,55)	3480 (3,55)	2500 (2,55)	2500 (2,55)	2500 (2,55)	1960 (2,00)	1960 (2,00)	1570 (1,60)	1620 (1,65)	1130 (1,15)	830 (0,85)
	2100 Arm	2260 (2,30)	2260 (2,30)	2260 (2,30)	2110 (2,15)	2110 (2,15)	2110 (2,15)	1770 (1,80)	1770 (1,80)	1620 (1,65)	1520 (1,55)	1030 (1,05)	780 (0,80)
2m	1750 Arm	3780 (3,85)	3190 (3,25)	2300 (2,35)	3630 (3,70)	3090 (3,15)	2210 (2,25)	2350 (2,40)	1960 (2,00)	1470 (1,50)	1620 (1,65)	1030 (1,05)	780 (0,80)
	2100 Arm	3820 (3,90)	3730 (3,80)	2650 (2,70)	3240 (3,30)	3190 (3,25)	2300 (2,35)	2210 (2,25)	1960 (2,00)	1470 (1,50)	1520 (1,55)	980 (1,00)	740 (0,75)
1m	1750 Arm	2940 (3,00)	2890 (2,95)	2060 (2,10)	3090 (3,15)	2890 (2,95)	2060 (2,10)	2700 (2,75)	1860 (1,90)	1370 (1,35)	1670 (1,70)	1030 (1,05)	740 (0,75)
	2100 Arm	2750 (2,80)	2750 (2,80)	2300 (2,35)	4020 (4,10)	2890 (2,95)	2060 (2,10)	2600 (2,65)	1860 (1,90)	1370 (1,35)	1570 (1,60)	930 (0,95)	690 (0,70)
0m	1750 Arm	2300 (2,35)	2300 (2,35)	2300 (2,35)	4120 (4,20)	2790 (2,85)	2010 (2,05)	2790 (2,85)	1770 (1,80)	1320 (1,35)	1720 (1,75)	1030 (1,05)	780 (0,80)
	2100 Arm	1910 (1,95)	1910 (1,95)	1910 (1,95)	4170 (4,25)	2790 (2,85)	1960 (2,00)	2790 (2,85)	1770 (1,80)	1320 (1,35)	1570 (1,60)	930 (0,95)	690 (0,70)
-1m	1750 Arm	3290 (3,35)	3290 (3,35)	3290 (3,35)	3780 (3,85)	2790 (2,85)	1960 (2,00)	2700 (2,75)	1770 (1,80)	1270 (1,30)	1720 (1,75)	1130 (1,15)	830 (0,85)
	2100 Arm	1860 (1,90)	1860 (1,90)	1860 (1,90)	3920 (4,00)	2790 (2,85)	1960 (2,00)	2750 (2,80)	1770 (1,80)	1270 (1,30)	1620 (1,65)	1030 (1,05)	780 (0,80)
-3m	1750 Arm	2400 (2,45)	2400 (2,45)	2400 (2,45)	1810 (1,85)	1810 (1,85)	1810 (1,85)						
	2100 Arm	4950 (5,05)	4950 (5,05)	4950 (5,05)	2350 (2,40)	2350 (2,40)	2010 (2,05)	1570 (1,60)	1570 (1,60)	1320 (1,35)			



* Working ranges are with Kubota standard bucket, without quick coupler.
* Specifications are subject to change without notice for purpose of improvement.

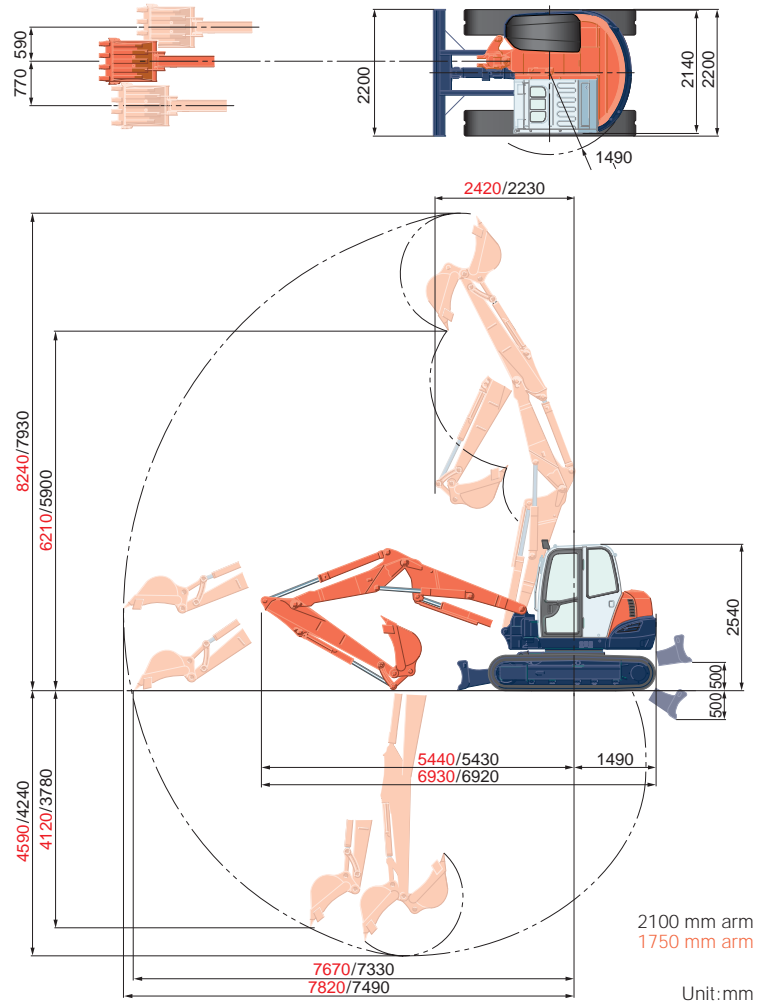
Please note:
* The lifting capacities are based on ISO 10567 and do not exceed 75% of the static tilt load of the machine or 87% of the hydraulic lifting capacity of the machine.
* The excavator bucket, hook, sling and other lifting accessories are not included on this table.

SPECIFICATIONS

*with rubber shoe, JPN bucket and 2100 mm arm

Machine weight (w/o extra counter weight)	kg	8700		
Bucket capacity, std. SAE/CECE	m ³	0.25/0.21		
Bucket width	With side teeth	mm	800	
	Without side teeth	mm	700	
Engine	Model	V3800DI		
	Type	Water-cooled, diesel engine E-TVCS (Economical, ecological type)		
	Output ISO9249	PS/rpm	65.0/2000	
		kW/rpm	47.8/2000	
	Number of cylinders	4		
	Bore × Stroke	mm		100 × 120
Displacement	cc		3769	
Swivelling speed	rpm	9.5		
Rubber shoe width	mm	450		
Tumbler distance	mm	2300		
Dozer size (width × height)	mm	2200 × 500		
Hydraulic pumps	P1, P2	Variable displacement pump		
	Flow rate	ℓ/min		72.0 × 2
	Hydraulic pressure	MPa (kgf/cm ²)		27.5 (280)
	P3	Gear type		
	Flow rate	ℓ/min		66.6
	Hydraulic pressure	MPa (kgf/cm ²)		20.6 (210)
Max. digging force	Arm	kN (kgf)	38.1 (3880)	
	Bucket	kN (kgf)	65.2 (6650)	
Boom swing angle (left/right)	deg	70/60		
Minimum front swivel radius with boom swing (left/right)		1990/2310		
Auxiliary circuit (SP1)	Max. flow rate	ℓ/min		100
	Max. hydraulic pressure	MPa (kgf/cm ²)		20.6 (210)
Auxiliary circuit (SP2)	Max. flow rate	ℓ/min		66.6
	Max. hydraulic pressure	MPa (kgf/cm ²)		20.6 (210)
Hydraulic reservoir	ℓ	75		
Fuel tank capacity	ℓ	115		
Max. travelling speed	Low	km/h		2.8
	High	km/h		5.1
Ground contact pressure	kPa (kgf/cm ²)	37.8 (0.386)		
Ground clearance	mm	390		

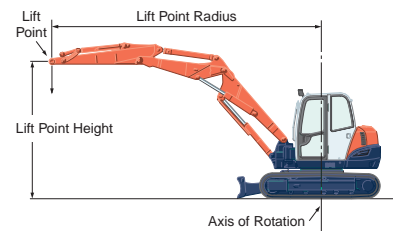
WORKING RANGE



LIFTING CAPACITY

*With extra counter weight

Lift Point Height	Lifting point radius (Min)	daN (ton)													
		Lifting point radius (3m)		Lifting point radius (4m)			Lifting point radius (Max)								
		Over-front	Over-side	Over-front	Over-side	Over-side	Over-front	Over-side	Over-side	Blade Down	Blade Up				
5m	1750 Arm	2400 (2,45)	2400 (2,45)	2400 (2,45)	2260 (2,30)	2260 (2,30)	2260 (2,30)	1910 (1,95)	1910 (1,95)	1860 (1,90)					
	2100 Arm							1770 (1,80)	1770 (1,80)	1770 (1,80)					
3m	1750 Arm							2300 (2,35)	2260 (2,30)	1720 (1,75)	1520 (1,55)	1080 (1,10)	830 (0,85)		
	2100 Arm	3240 (3,30)	3240 (3,30)	3040 (3,10)	2990 (3,05)	2990 (3,05)	2750 (2,80)	2160 (2,20)	2160 (2,20)	1720 (1,75)	1420 (1,45)	980 (1,00)	740 (0,75)		
2m	1750 Arm							2600 (2,65)	2110 (2,15)	1570 (1,60)	1470 (1,50)	1030 (1,05)	740 (0,75)		
	2100 Arm							2500 (2,55)	2160 (2,20)	1570 (1,60)	1370 (1,40)	930 (0,95)	690 (0,70)		
1m	1750 Arm							2700 (2,75)	2010 (2,05)	1470 (1,50)	1370 (1,40)	980 (1,00)	740 (0,75)		
	2100 Arm							2650 (2,70)	2010 (2,05)	1470 (1,50)	1320 (1,35)	930 (0,95)	690 (0,70)		
0m	1750 Arm							2550 (2,60)	1960 (2,00)	1420 (1,45)	1320 (1,35)	1030 (1,05)	740 (0,75)		
	2100 Arm	2160 (2,20)	2160 (2,20)	2160 (2,20)	2300 (2,35)	2300 (2,35)	2110 (2,15)	2600 (2,65)	1910 (1,95)	1370 (1,40)	1230 (1,25)	930 (0,95)	690 (0,70)		
-1m	1750 Arm	2060 (2,10)	2060 (2,10)	2060 (2,10)	2750 (2,80)	2750 (2,80)	2160 (2,20)	2210 (2,25)	1960 (2,00)	1420 (1,45)					
	2100 Arm	2010 (2,05)	2010 (2,05)	2010 (2,05)	3090 (3,15)	3040 (3,10)	2110 (2,15)	2350 (2,40)	1910 (1,95)	1370 (1,40)	1180 (1,20)	1030 (1,05)	740 (0,75)		
-3m	1750 Arm							690 (0,70)	690 (0,70)	690 (0,70)					
	2100 Arm				1320 (1,35)	1320 (1,35)	1320 (1,35)	1080 (1,10)	1080 (1,10)	1080 (1,10)					



* Working ranges are with Kubota standard bucket, without quick coupler.
* Specifications are subject to change without notice for purpose of improvement.

Please note:
* The lifting capacities are based on ISO 10567 and do not exceed 75% of the static tilt load of the machine or 87% of the hydraulic lifting capacity of the machine.
* The excavator bucket, hook, sling and other lifting accessories are not included on this table.