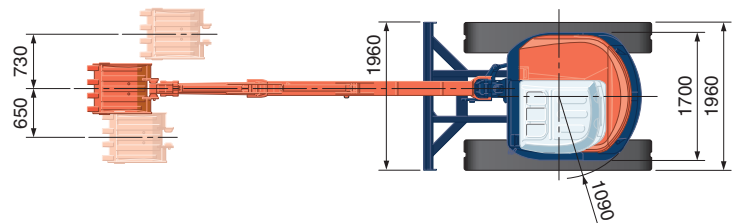
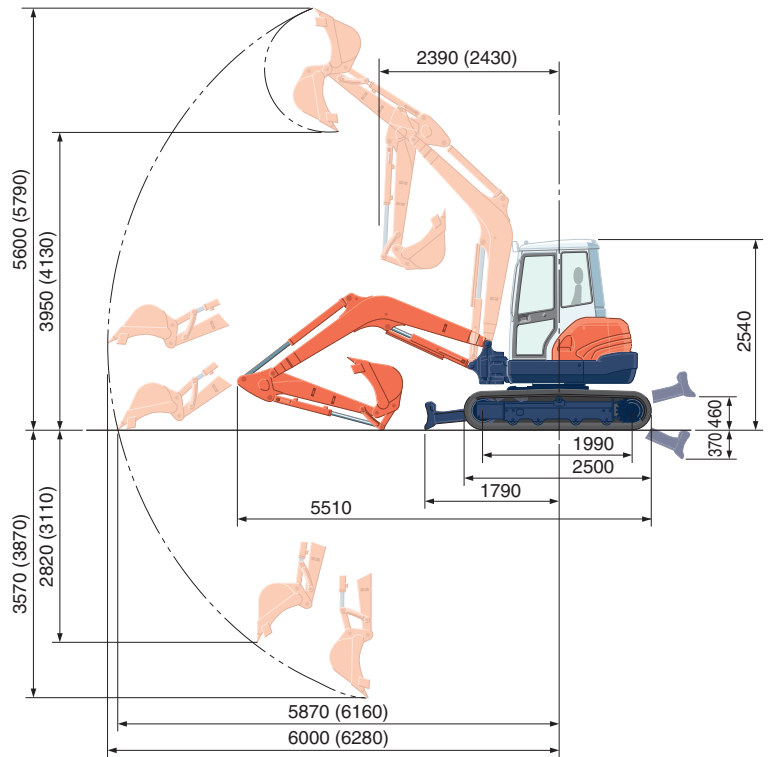


SPECIFICATIONS

*Rubber shoe type				
Machine weight	Cabin	kg	5100	
Bucket capacity, std. SAE/CECE		m ³	0.17/0.15	
Bucket width	With side teeth	mm	680	
	Without side teeth	mm	650	
Engine	Model	V2203-M-EBH-2-N		
	Type	Water-cooled, diesel engine E-TVCS (Economical, ecological type)		
	Output ISO9249	PS/rpm	40/2250	
		kW/rpm	29.4/2250	
	Number of cylinders	4		
	Bore × Stroke	mm		83 × 92.4
Displacement	cc		2197	
Overall length		mm	5510	
Overall height	Cabin	mm	2540	
Swivelling speed		rpm	9.3	
Rubber shoe width		mm	400	
Tumbler distance		mm	1990	
Dozer size (width × height)		mm	1960 × 390	
Hydraulic pumps	PI	Variable displacement pump		
	Flow rate	ℓ/min	121.5	
	Hydraulic pressure	MPa (kgf/cm ²)	23.5 (240)	
Max. digging force	Arm	kN (kgf)	24.5 (2495)	
	Bucket	kN (kgf)	39.9 (4075)	
Boom swing angle (left/right)	deg	80/50		
Auxiliary circuit	Flow rate	ℓ/min	75	
	Hydraulic pressure	MPa (kgf/cm ²)	23.5 (240)	
Hydraulic reservoir		ℓ	44	
Fuel tank capacity		ℓ	70	
Max. travelling speed	Low	km/h	2.5	
	High	km/h	4.4	
Ground contact pressure	Cabin	kPa (kgf/cm ²)	28.8 (0.294)	
Ground clearance		mm	320	

WORKING RANGE



(): Long Arm
Unit: mm

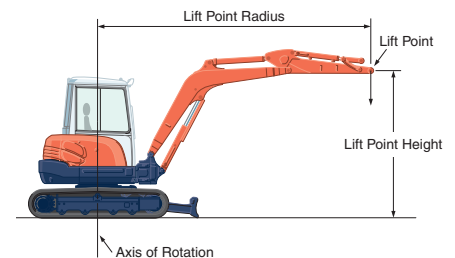
LIFTING CAPACITY

Lift Point Height	Lifting point radius (3m)			Lifting point radius (4m)		
	Over-front		Over-side	Over-front		Over-side
	Blade Down	Blade UP		Blade Down	Blade UP	
3m	-	-	-	9.8 (1.00)	9.8 (1.00)	9.5 (0.97)
2m	15.3 (1.56)	15.3 (1.56)	14.1 (1.44)	11.4 (1.16)	10.5 (1.07)	9.1 (0.93)
1m	20.3 (2.07)	15.4 (1.57)	13.1 (1.33)	13.3 (1.36)	10.1 (1.03)	8.7 (0.89)
0m	21.8 (2.23)	14.9 (1.52)	12.6 (1.29)	14.4 (1.47)	9.8 (1.00)	8.5 (0.86)

Please note:

* The lifting capacities are based on ISO 10567 and do not exceed 75% of the static tilt load of the machine or 87% of the hydraulic lifting capacity of the machine.

* The excavator bucket, hook, sling and other lifting accessories are not included on this table.



* Working ranges are with Kubota standard bucket, without quick coupler.

* Specifications are subject to change without notice for purpose of improvement.

KUBOTA (U.K.) LTD

Dormer Road, Thame Oxfordshire,
OX93UN, U.K.

Phone : 01844-268140

F a x : 01844-216685