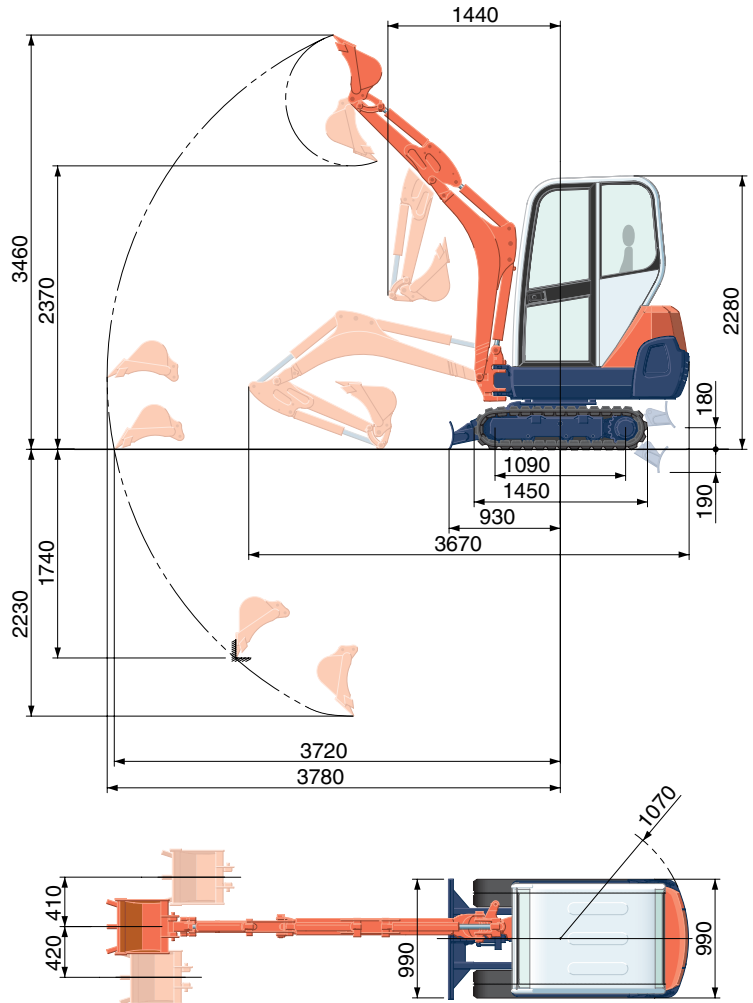


# SPECIFICATIONS

\*Rubber shoe type

Machine weight	Cabin	kg	1580	
	Canopy	kg	1490	
Bucket capacity, std. SAE/CECE		m <sup>3</sup>	0.035	
Bucket width	with side teeth	mm	422	
	without side teeth	mm	402	
Model		D782-BH		
Type		Water-cooled diesel engine E-TVCS		
Engine	Output ISO9249	PS/rpm	12/2300	
		kW/rpm	9/2300	
	Number of cylinders		3	
	Bore x stroke		mm	67 x 73.6
	Displacement		cc	778
Overall length		mm	3670	
Overall height	Cabin	mm	2280	
	Canopy	mm	2280	
Swivelling speed		rpm	9.1	
Rubber shoe width		mm	230	
Tumbler distance		mm	1090	
Dozer size (width x height)		mm	990 x 230	
Hydraulic pumps	P1,P2		Variable displacement pump	
	Flow rate	ℓ/min	16.6	
	Hydraulic pressure	MPa(kgf/cm <sup>2</sup> )	20.6 (210)	
	P3		Gear type	
	Flow rate	ℓ/min	10.4	
Hydraulic pressure		MPa(kgf/cm <sup>2</sup> )	20.1 (205)	
Max. digging force	Arm	kN (kgf)	7.2 (735)	
	Bucket	kN (kgf)	13.0 (1327)	
Boom swing angle (left/right)		deg	73/50	
Auxiliary circuit	Flow rate	ℓ/min	27	
	Hydraulic pressure	MPa(kgf/cm <sup>2</sup> )	20.6 (210)	
Hydraulic reservoir		ℓ	27	
Fuel tank capacity		ℓ	21	
Max. travelling speed	Low	km/h	2.2	
	High	km/h	-	
Ground contact pressure	Cabin	kPa(kgf/cm <sup>2</sup> )	26.4 (0.27)	
	Canopy	kPa(kgf/cm <sup>2</sup> )	24.7 (0.25)	
Ground clearance		mm	160	

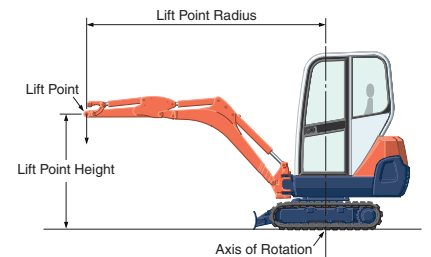
# WORKING RANGE



( ): Long Arm  
Unit: mm

# LIFTING CAPACITY

Lift Point Height	kN (ton)					
	Lifting point radius (2m)			Lifting point radius (3m)		
	Over-front		Over-side	Over-front		Over-side
Blade Down	Blade Up	Blade Down		Blade Up		
1.5m	3.8 (0.39)	3.6 (0.36)	2.8 (0.28)	3.5 (0.35)	1.8 (0.19)	1.4 (0.15)
1.0m	5.4 (0.55)	3.4 (0.34)	2.6 (0.26)	3.6 (0.36)	1.8 (0.18)	1.4 (0.14)
0.5m	6.4 (0.65)	3.1 (0.32)	2.4 (0.24)	3.6 (0.36)	1.7 (0.18)	1.4 (0.14)
0m	6.3 (0.64)	3.0 (0.31)	2.3 (0.23)	3.4 (0.35)	1.7 (0.17)	1.3 (0.13)



Please note:

\* The lifting capacities are based on ISO 10567 and do not exceed 75% of the static tilt load of the machine or 87% of the hydraulic lifting capacity of the machine.

\* The excavator bucket, hook, sling and other lifting accessories are not included on this table.

\* Working ranges are with Kubota standard bucket, without quick coupler.

\* Specifications are subject to change without notice for purpose of improvement.

## KUBOTA (U.K.) LTD

Dormer Road, Thame Oxfordshire,  
OX93UN, U.K.  
Phone : 01844-268140  
F a x : 01844-216685